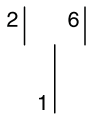


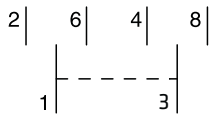
### Lever switches

TECHNICAL DATA			
Standards:		EN 60669-1	
Rated operating voltage (Ue):	(V)	250 a.c.	
Rated frequency:	(Hz)	50/60	
Rated operating current (Ie):	(A)	16	32
Device power loss:	(W)		
GW 96 551		0.4	-
GW 96 552		0.8	-
GW 96 553		0.4	-
GW 96 554		0.8	-
GW 96 555 - GW 96 556		0.4	2.8
Operating temperature:	(°C)	5...40	
Maximum cable section:	(mm <sup>2</sup> )	6 (flexible) 10 (rigid)	
Lockable:		with GW 96 041 (padlocking lever block)	

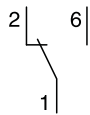
### Circuit diagrams



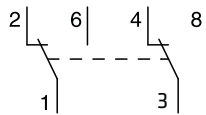
GW 96 553



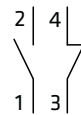
GW 96 554



GW 96 551



GW 96 552



GW 96 555  
GW 96 556

